

OCTOBER 2020

# House Beautiful

## The KITCHEN Issue

AMAZING NEW:  
**Hardware** p. 55  
**Counter Stools** p. 59  
**Faucets** p. 24  
**Backsplashes** p. 63  
**Pendants** p. 31  
and more!

+  
Brilliant  
Wine  
Storage  
For Any  
Space  
p. 17

JEAN LIU DESIGNS  
A DOWNSIZER'S  
DREAM KITCHEN p. 82

A Secret  
Pantry  
COULD CHANGE YOUR LIFE.  
(IT'S TRUE!)  
p. 24



This dramatic Waterstone faucet is one of four in the room.



Accordion glass doors retract to increase the family's hangout space.



A ladder off the pool area can handle wet feet and dirty dishes. Faucet: Waterstone. Tile: Waterworks.



A built-in Breville coffee maker was the mother's number one request.

**W**HEN, AFTER NEARLY a decade of slowly renovating the rest of their home, a Pacific Palisades, California, family of seven finally

faced their kitchen, they turned to their go-to designer, Caren Rideau, founder of the Kitchen Design Group, with a request to rework it into a multifunctional room.

Well, they had a few more specific requests too. "They wanted a place for coffee, an area for wine. A walk-in pantry. A drop-off zone for the kids. And most important, direct access to the backyard," says Rideau. "We weren't adding square footage, so we needed to get a lot into this space."

Since the family eats and cooks together nearly every night, and mom in particular is an avid pasta maker, Rideau chose a 60-inch BlueStar range "that can handle commercial-size trays," and added a pot filler so she wouldn't have to lug heavy vessels back and forth. The island serves as a prep area for making lunches and dividing up the wares from their weekly Costco runs, while three sinks and three dishwashers mean everyone can pitch in on cleanup.

Practicality is key, but plenty of attention was paid to showstopping color and patterns. It didn't take much convincing to get the clients on board with the tranquil blue palette from Rideau's Frida line of cabinetry, but the tile was a different story. "They loved it, but wanted to use it in a 'little way,' like on a pantry floor," she says. Instead, she took it from countertop to ceiling. Rideau's mantra is, "If you love it, you should see it!" And now, the kitchen feels as joyous as its inhabitants.



The "summer center" has all the accoutrements for adult nights in.



Closed storage keeps most of the hobby chase out of sight.

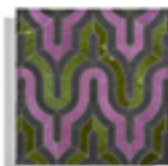
## INCREDIBLE KITCHENS

# Bigger Splash

You can do better than subway tile. Read: detailed mosaics, graphic tiles, or full-surface slabs.



Fabricated from cut pieces of quartz to mimic butcher block. **Brittanica Block**, from \$120 per sq. ft. combriusa.com



A customizable waterjet mosaic. **Kashah Iris**, as shown \$246 per sq. ft. newavena.com

**Kent Contour 3D**, \$7 per sq. ft. Also available flat. tilebar.com



**Liquid Embers**, from \$58 per sq. ft. deklon.com



Glass mosaic. **Hip 28 Square**, \$75 per sq. ft. orlatotile.com



Designed to emulate canoees. **Keel Coastline Blend**, \$48 per sq. ft. karekobbytile.com



**Sound Wave** by Foresti Lesci-Midleton, \$24 per tile. ifinceramics.com



Composite of woods cast in a non-VOC resin. **Foresco Timber Terrazzo**, from \$65 per sq. ft. 4pgd.com



**Amazonia Emerald Tropic**, \$13 per sq. ft. tilefogs.com



Extra-large terrazzo quartz. **Karekare**, from \$65 per sq. ft. wilsonart.com

#### A Serene Color Story

Cabinetry from Caren RIDEAU's colorful Frida Collection allows white accents like her custom range hood and **Casca Lighting** pendants to pop. Catania cement tiles from **Veranda Tile Design** anchor the cooking wall, while brass rails give access to upper storage via a ladder stashed in the adjoining room. **Sink: Kohler. Hardware: Lark. Wine storage: Sub-Zero.**

# Look Beneath the Surface

Beyond an intricate sea of blues is a hardworking space for a family of seven. *By Carisha Swanson*

Interior Designer: CAREN RIDEAU  
Photographer: MELGAN BEARLE O'BRIEN